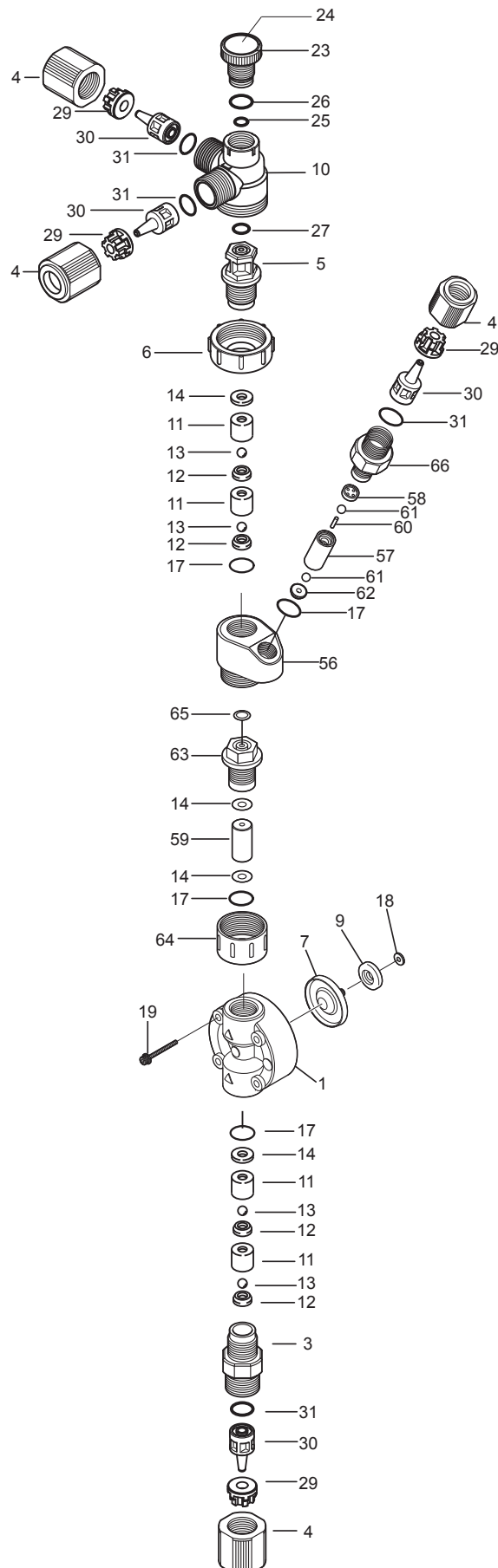


EWN / EK 09-21 VC-A / VE-A / VC-C / VE-C Exploded View
 EJB 11-21 VC-A / VE-A Exploded View

W A L C H E M

IWAKI America Inc.



EWN/EK 09-21 VC-A / VE-A/ VC-C / VE-C Components

Item	Part#	Description	Qty	Material	Size	Liquid End Material
1	EH2015	Pump Head	1	PVC	B11	VCA,VEA
	EH1950		1	PVC	B16 / C16	VCA,VEA
	EH1951		1	PVC	B21 / C21	VCA,VEA
	EH2373		1	PVC	B-09-C	VCC,VEC
	EH2374		1	PVC	B-11-C	VCC,VEC
	EH2239		1	PVC	B16-C / C16-C	VCC,VEC
	EH2236		1	PVC	B21-C / C21-C	VCC,VEC
3	EH2328	Housing, Valve (Suction)	1	PVC	B11,16,21 / C16,21 / B09,11,16,21-C / C16,21-C	VCA,VEA,VCC,VEC
4	EH2330	Coupling Nut	4	PVC	B11,16,21 / C16,21 / B09,11,16,21-C / C16,21-C	VCA,VEA,VCC,VEC
5	EH2331	Fitting, MAVV	1	PVC	B11,16,21 / C16,21 / B09,11,16,21-C / C16,21-C	VCA,VEA,VCC,VEC
6	EH2333	Lock Nut, MAVV	1	PVC	B11,16,21 / C16,21 / B09,11,16,21-C / C16,21-C	VCA,VEA,VCC,VEC
*7	EH2376	Diaphragm	1	PTFE+EPDM	B09-C	VCC,VEC
	EH1971		1	PTFE+EPDM	B11 / B11-C	VCA,VEA,VCC,VEC
	EH1972		1	PTFE+EPDM	B16 / C16 / B16-C / C16-C	VCA,VEA,VCC,VEC
	EH1973		1	PTFE+EPDM	B21 / C21 / B21-C / C21-C	VCA,VEA,VCC,VEC
*9	EH0291	Retainer	1	PPS+GF	B09-C	VCC,VEC
	EH0059		1	PPS+GF	B11 / B11-C	VCA,VEA,VCC,VEC
	EH0083		1	PPS+GF	B16 / C16 / C16-C	VCA,VEA,VCC,VEC
	EH0067		1	PPS+GF	B21 / C21 / B21-C / C21-C	VCA,VEA,VCC,VEC
10	EH2334	Body, MAVV	1	PVC	B11,16,21 / C16,21 / B09,11,16,21-C / C16,21-C	VCA,VEA,VCC,VEC
*11	EH0060	Guide, Valve	4	PVC	B11 / B09,11-C	VCA,VEA,VCC,VEC
	EH0068		4	PVC	B16,21 / C16,21 / B16,21-C / C16,21-C	VCA,VEA,VCC,VEC
*12	EH0061	Seat, Valve	4	FKMA	B11 / B09,11-C	VCA,VCC
	EH0069		4	FKMA	B16,21 / C16,21 / B16,21-C / C16,21-C	VCA,VCC
	EH0048		4	EPDM	B11 / B09,11-C	VEA,VEC
	EH0071		4	EPDM	B16,21 / C16,21 / B16,21-C / C16,21-C	VEA,VEC
*13	EH0025	Ball, Valve	4	CE	B11 / B09,11-C	VCA,VEA,VCC,VEC
	EH0084		4	CE	B16,21 / C16,21 / B16,21-C / C16,21-C	VCA,VEA,VCC,VEC
*14	EH0026	Gasket, Valve	4	PTFE	B11,16,21 / C16,21 / B09,11,16,21-C / C16,21-C	VCA,VEA,VCC,VEC
*17	EH0027	O-Ring, S14	4	FKMA	B11,16,21 / C16,21 / B09,11,16,21-C / C16,21-C	VCA,VCC
	EH0050		4	EPDM	B11,16,21 / C16,21 / B09,11,16,21-C / C16,21-C	VEA,VEC
19	EH1986	Bolt, Hex Soc. w/washers	4	M4X35 316SS	B11,16,21 / C16,21 / B09,11,16,21-C / C16,21-C	VCA,VEA,VCC,VEC
23	EH0299	Knob, MAVV	1	PVC	B11,16,21 / C16,21 / B09,11,16,21-C / C16,21-C	VCA,VEA,VCC,VEC
24	EH1314	Label, MAVV Knob	1		B11,16,21 / C16,21 / B09,11,16,21-C / C16,21-C	ALL
*25	EH0300	O-Ring, P4	1	FKMA	B11,16,21 / C16,21 / B09,11,16,21-C / C16,21-C	VCA,VCC
	EH0301		1	EPDM	B11,16,21 / C16,21 / B09,11,16,21-C / C16,21-C	VEA,VEC
*26	EH0302	O-Ring, P10A	1	FKMA	B11,16,21 / C16,21 / B09,11,16,21-C / C16,21-C	VCA,VCC
	EH0303		1	EPDM	B11,16,21 / C16,21 / B09,11,16,21-C / C16,21-C	VEA,VEC
*27	EH2335	O-Ring, P10	1	FKMA	B11,16,21 / C16,21 / B09,11,16,21-C / C16,21-C	VCA,VCC
	EH2336		1	EPDM	B11,16,21 / C16,21 / B09,11,16,21-C / C16,21-C	VEA,VEC
*29	EH2337	Clamp Ring, 3/8" OD	4	PPS+GF	B11,16,21 / C16,21 / B09,11,16,21-C / C16,21-C	VCA,VEA,VCC,VEC
*30	EH2339	Adapter,Tubing, 3/8"OD	4	PVC	B11,16,21 / C16,21 / B09,11,16,21-C / C16,21-C	VCA,VEA,VCC,VEC
*31	EH2341	O-Ring, P9	4	FKMA	B11,16,21 / C16,21 / B09,11,16,21-C / C16,21-C	VCA,VCC
	EH1585		4	EPDM	B11,16,21 / C16,21 / B09,11,16,21-C / C16,21-C	VEA,VEC
56	EH1682	Body, Auto Degassing Valve	1	PVC	B11,16,21 / C16,21 / B09,11,16,21-C / C16,21-C	VCA,VEA,VCC,VEC
*57	EH1684	Guide, Separation Pin, ADV	1	PVC	B11,16,21 / C16,21 / B09,11,16,21-C / C16,21-C	VCA,VEA,VCC,VEC
*58	EH1685	Top Disc, Guide, ADV	1	PVC	B11,16,21 / C16,21 / B09,11,16,21-C / C16,21-C	VCA,VEA,VCC,VEC
59	EH1683	Spacer, Valve Guides, ADV	1	PVC	B11,16,21 / C16,21 / B09,11,16,21-C / C16,21-C	VCA,VEA,VCC,VEC
*60	EH1686	Separation Pin, ADV	1	Titanium	B11,16,21 / C16,21 / B09,11,16,21-C / C16,21-C	VCA,VCC
	EH1687		1	HC276	B11,16,21 / C16,21 / B09,11,16,21-C / C16,21-C	VEA, VCA-H, VCC-H
*61	EH0025	Ball, Valve, ADV	2	CE	B11,16,21 / C16,21 / B09,11,16,21-C / C16,21-C	VCA,VEA,VCC,VEC
*62	EH0061	Seat, Valve, ADV	1	FKMA	B11,16,21 / C16,21 / B09,11,16,21-C / C16,21-C	VCA,VCC
	EH0048		1	EPDM	B11,16,21 / C16,21 / B09,11,16,21-C / C16,21-C	VEA,VEC
63	EH0294	Fitting, ADV	1	PVC	B11,16,21 / C16,21 / B09,11,16,21-C / C16,21-C	VCA,VEA,VCC,VEC
64	EH0295	Lock Nut, ADV	1	PVC	B11,16,21 / C16,21 / B09,11,16,21-C / C16,21-C	VCA,VEA,VCC,VEC
*65	EH0304	O-Ring, P7	1	FKMA	B11,16,21 / C16,21 / B09,11,16,21-C / C16,21-C	VCA,VCC
	EH0305		1	EPDM	B11,16,21 / C16,21 / B09,11,16,21-C / C16,21-C	VEA,VEC
66	EWN0157	Housing, Valve, ADV	1	PVC	B11,16,21 / C16,21 / B09,11,16,21-C / C16,21-C	VCA,VEA,VCC,VEC
18	-----	Brass Spacers	--	Brass	Drive Specific. Reuse with Dia. change	ALL

* Parts Included in the Spart Parts Kits

P/N 180647.E
1/18/2017