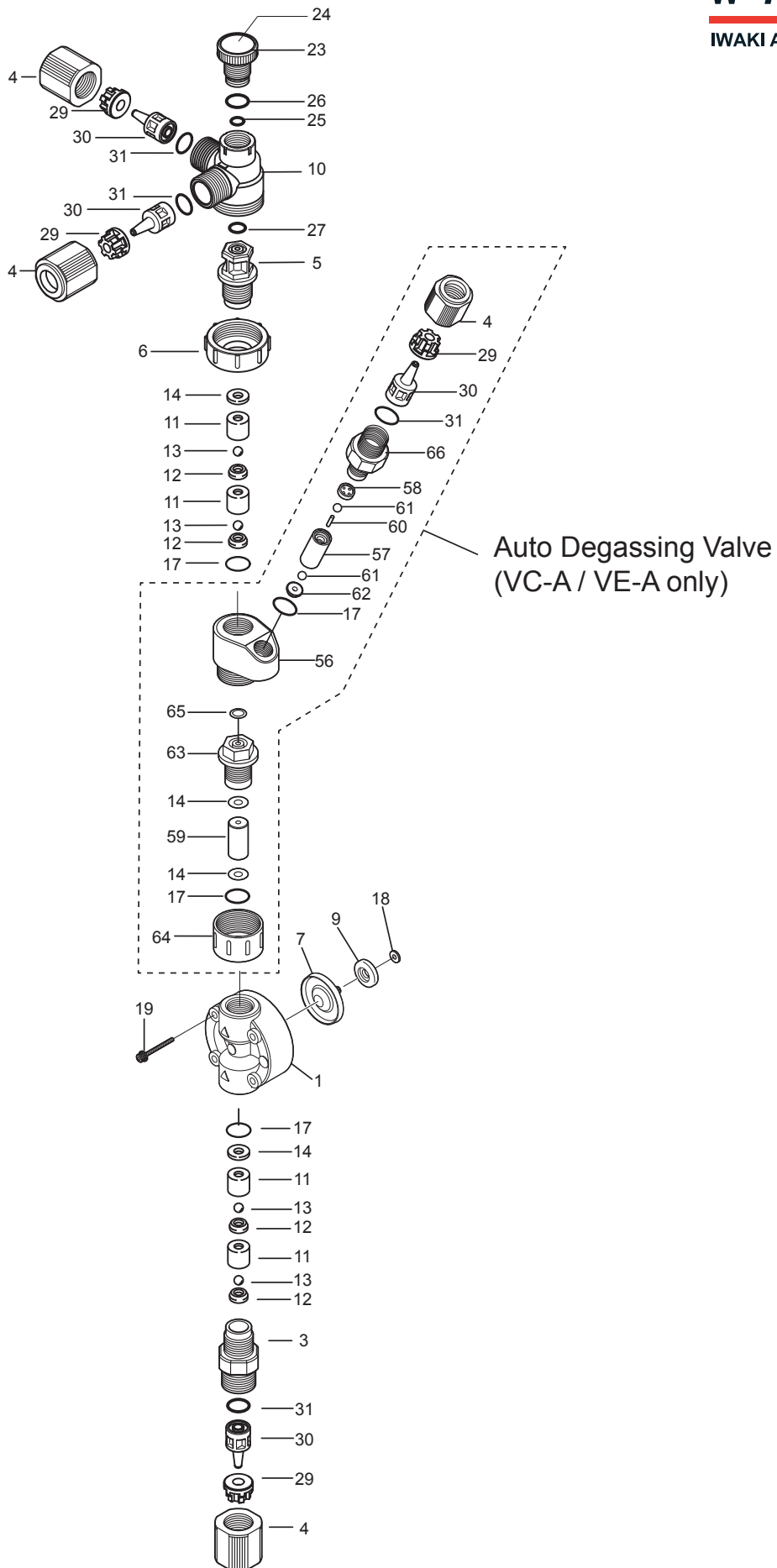


# EJB 09 VC / VE / VF / VC-A / VE-A Exploded View

**W A L C H E M**

IWAKI America Inc.



## EJB 09 VC / VE / VF / VC-A / VE-A Components

Item	Part#	Description	Qty	Material	Size	Liquid End Material
1	EH2374	Pump Head	1	PVC	B09	VC,VE, VF, VCA, VEA
3	EH2328	Housing, Valve (Suction)	1	PVC	B09	VC,VE, VF, VCA, VEA
4	EH2330	Coupling Nut	3 (4)	PVC	B09	VC,VE, VF (VCA, VEA)
5	EH2331	Fitting, MAVV	1	PVC	B09	VC,VE, VF, VCA, VEA
6	EH2333	Lock Nut, MAVV	1	PVC	B09	VC,VE, VF, VCA, VEA
*7	EH1971	Diaphragm	1	PTFE+EPDM	B09	VC,VE, VF, VCA, VEA
*9	EH2472	Retainer	1	PPS+GF	B09	VC,VE, VF, VCA, VEA
10	EH2334	Body, MAVV	1	PVC	B09	VC,VE, VF, VCA, VEA
*11	EH0060	Guide, Valve	4	PVC	B09	VC,VE, VF, VCA, VEA
*12	EH0061	Seat, Valve	4	FKMA	B09	VC,VCA
	EH0048		4	EPDM	B09	VE,VF, VEA
*13	EH0025	Ball, Valve	4	CE	B09	VC,VE, VCA, VEA
	EH0063		4	PTFE	B09	VF
*14	EH0026	Gasket, Valve	2 (4)	PTFE	B09	VC,VE, VF (VCA, VEA)
*17	EH0027	O-Ring, S14	2 (4)	FKMA	B09	VC (VCA)
	EH0050		2 (4)	EPDM	B09	VE, VF (VEA)
19	EH1986	Bolt, Hex Soc. w/washers	4	M4X35 316SS	B09	VC,VE, VF, VCA, VEA
23	EH0299	Knob, MAVV	1	PVC	B09	VC,VE, VF, VCA, VEA
24	EH1314	Label, MAVV Knob	1		B09	VC,VE, VF, VCA, VEA
*25	EH0300	O-Ring, P4	1	FKMA	B09	VC,VCA
	EH0301		1	EPDM	B09	VE,VF, VEA
*26	EH0302	O-Ring, P10A	1	FKMA	B09	VC,VCA
	EH0303		1	EPDM	B09	VE,VF, VEA
*27	EH2335	O-Ring, P10	1	FKMA	B09	VC,VCA
	EH2336		1	EPDM	B09	VE,VF, VEA
*29	EH2337	Clamp Ring, 3/8" OD	3 (4)	PPS+GF	B09	VC,VE, VF (VCA, VEA)
*30	EH2339	Adapter,Tubing, 3/8"OD	3 (4)	PVC	B09	VC,VE, VF (VCA, VEA)
*31	EH2341	O-Ring, P9	3 (4)	FKMA	B09	VC (VCA)
	EH1585		3 (4)	EPDM	B09	VE,VF (VEA)
56	EH1682	Body, Auto Degassing Valve	1	PVC	B09	VCA,VEA
*57	EH1684	Guide, Separation Pin, ADV	1	PVC	B09	VCA,VEA
*58	EH1685	Top Disc, Guide, ADV	1	PVC	B09	VCA,VEA
59	EH1683	Spacer, Valve Guides, ADV	1	PVC	B09	VCA,VEA
*60	EH1686	Separation Pin, ADV	1	Titanium	B09	VCA
	EH1687		1	HC276	B09	VEA, VCA-H
*61	EH0025	Ball, Valve, ADV	2	CE	B09	VCA,VEA
*62	EH0061	Seat, Valve, ADV	1	FKMA	B09	VCA
	EH0048		1	EPDM	B09	VEA
63	EH0294	Fitting, ADV	1	PVC	B09	VCA,VEA
64	EH0295	Lock Nut, ADV	1	PVC	B09	VCA,VEA
*65	EH0304	O-Ring, P7	1	FKMA	B09	VCA
	EH0305		1	EPDM	B09	VEA
66	EWN0157	Housing, Valve, ADV	1	PVC	B09	VCA,VEA
18	-----	Brass Spacers	--	Brass	Drive Specific. Reuse with Dia. change	ALL