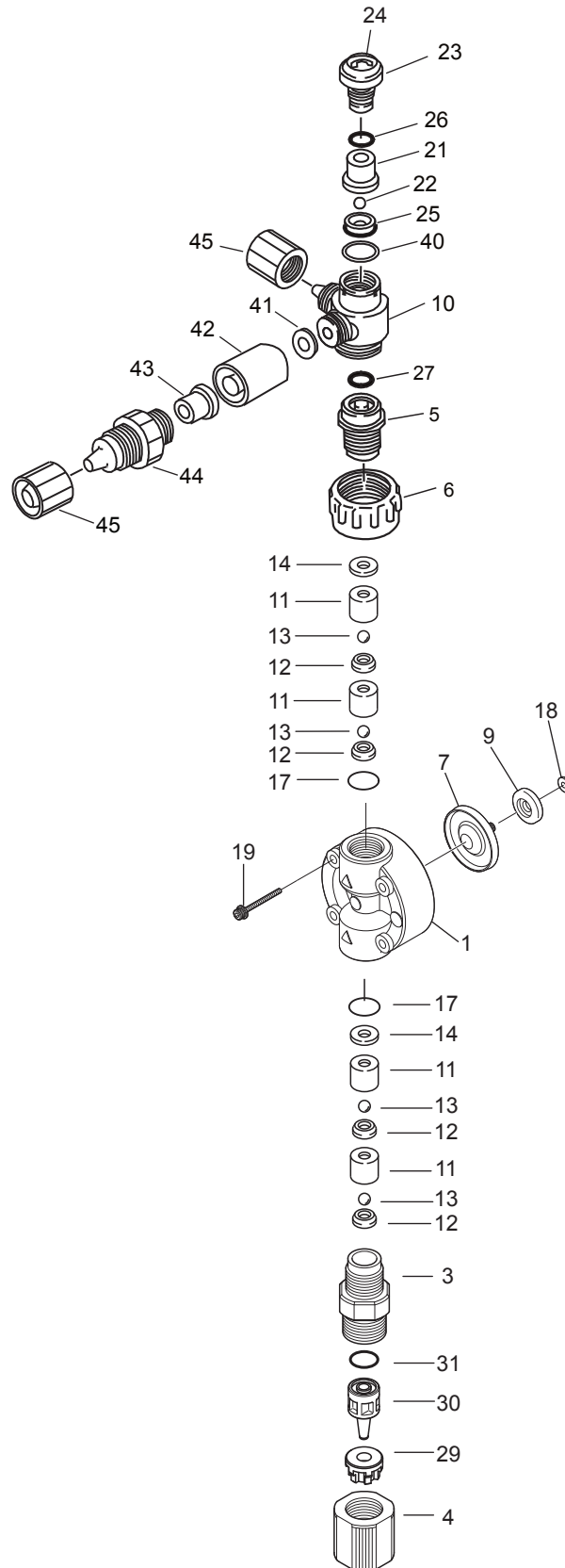


EWN/EK/EJ/EZ 11-21 VCA-F Exploded View

W A L C H E M

IWAKI America Inc.



EWN/EK/EJ/EZ 11-21 VCA-F Components

Item	Part#	Description	Qty	Material	Size
1	EH1947	Pump Head	1	PVC	EZB11
	EH1948		1	PVC	EZB16
	EH1949		1	PVC	EZB21
	EH2015		1	PVC	EWN/EK/EJ B11
	EH1950		1	PVC	EWN/EK/EJ B16/C16, EZC16
	EH1951		1	PVC	EWN/EK/EJ B21/C21, EZC21
3	EH2328	Housing, Valve (Suction)	1	PVC	B11,16,21 / C16,21
4	EH2330	Coupling Nut	1	PVC	B11,16,21 / C16,21
5	EH0294	Fitting, AAVV	1	PVC	B11,16,21 / C16,21
6	EH0295	Lock Nut, AAVV	1	PVC	B11,16,21 / C16,21
*7	EH1971	Diaphragm	1	PTFE+EPDM	B11
	EH1972		1	PTFE+EPDM	B16 / C16
	EH1973		1	PTFE+EPDM	B21 / C21
*9	EH0059	Retainer	1	PPS+GF	B11
	EH0083		1	PPS+GF	B16 / C16
	EH0067		1	PPS+GF	B21 / C21
10	EH0861	Body, AAVV	1	PVC	B11,16,21 / C16,21
*11	EH0060	Guide, Valve	4	PVC	B11 /
	EH0068		4	PVC	B16,21 / C16,21
*12	EH0061	Seat, Valve	4	FKMA	B11
	EH0069		4	FKMA	B16,21 / C16,21
	EH0048		4	EPDM	B11
	EH0071		4	EPDM	B16,21 / C16,21
*13	EH0025	Ball, Valve	4	CE	B11
	EH0084		4	CE	B16,21 / C16,21
*14	EH0026	Gasket, Valve	2	PTFE	B11,16,21 / C16,21
*17	EH0027	O-Ring, S14	2	FKMA	B11,16,21 / C16,21
	EH0050		2	EPDM	B11,16,21 / C16,21
19	EH1986	Bolt, Hex Soc. w/washers	4	M4x35 316SS	EW/EK/EJ B11-21/C16-21, EZC16-21
	EH1987		4	M4x40 316SS	EZB11,16,21
21	EH0862	Guide, Valve, AAVV	1	Titanium	B11,16,21 / C16,21
*22	EH0025	Ball, Valve, 0.188	1	CE	B11,16,21 / C16,21
23	EH0299	Knob, AAVV	1	PVC	B11,16,21 / C16,21
24	EH0772	Label, AAVV Knob	1		B11,16,21 / C16,21
*25	EH0061	Seat, Valve, .188	1	FKMA	B11,16,21 / C16,21
*26	EH2335	O-Ring, P10	1	FKMA	B11,16,21 / C16,21
*27	EH0304	O-Ring, P7	1	FKMA	B11,16,21 / C16,21
*29	EH2337	Clamp Ring, 3/8" OD	1	PPS+GF	B11,16,21 / C16,21
*30	EH2339	Adapter,Tubing, 3/8"OD	1	PVC	B11,16,21 / C16,21
*31	EH2341	O-Ring, P9	1	FKMA	B11,16,21 / C16,21
40	EH0775	Spacer, AAVV	1	PVC	B11,16,21 / C16,21
*41	EH0866	Gasket, AAVV	1	FKM	B11,16,21 / C16,21
42	EH0864	Fitting, Adaper, AAVV	1	PVC	B11,16,21 / C16,21
*43	EH0865	Tube, Valve, AAVV	1	FKM	B11,16,21 / C16,21
44	EH0867	Fitting, AAVV	1	PVC	B11,16,21 / C16,21
45	EH0401	Nut, Coupling, 3/8"	2	PVC	B11,16,21 / C16,21
18	-----	Brass Spacers	--	Brass	Drive Specific. Reuse with Dia. change

* Parts Included in the Spart Parts Kits